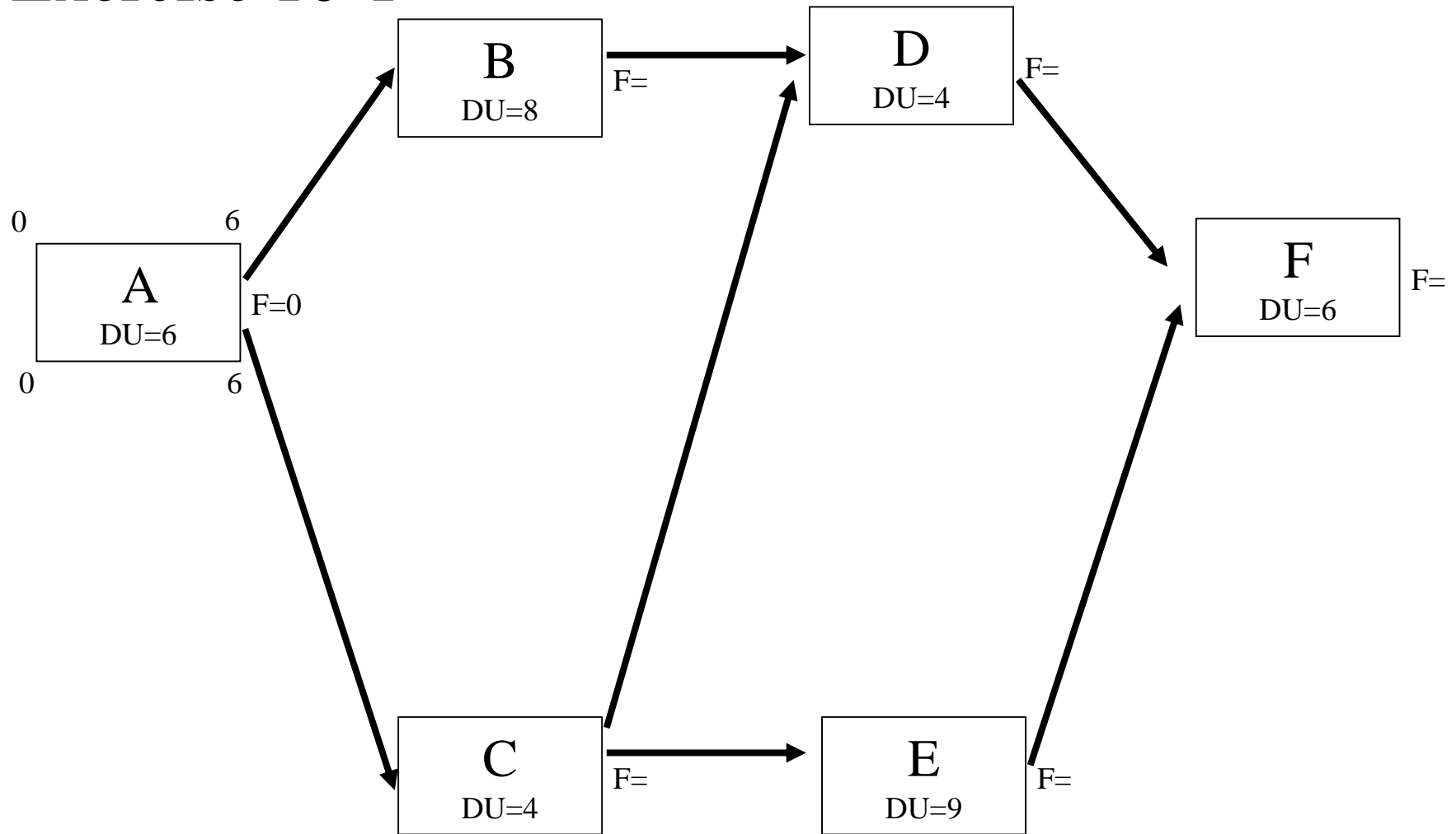


Date (月 日)

Name :

Student number :

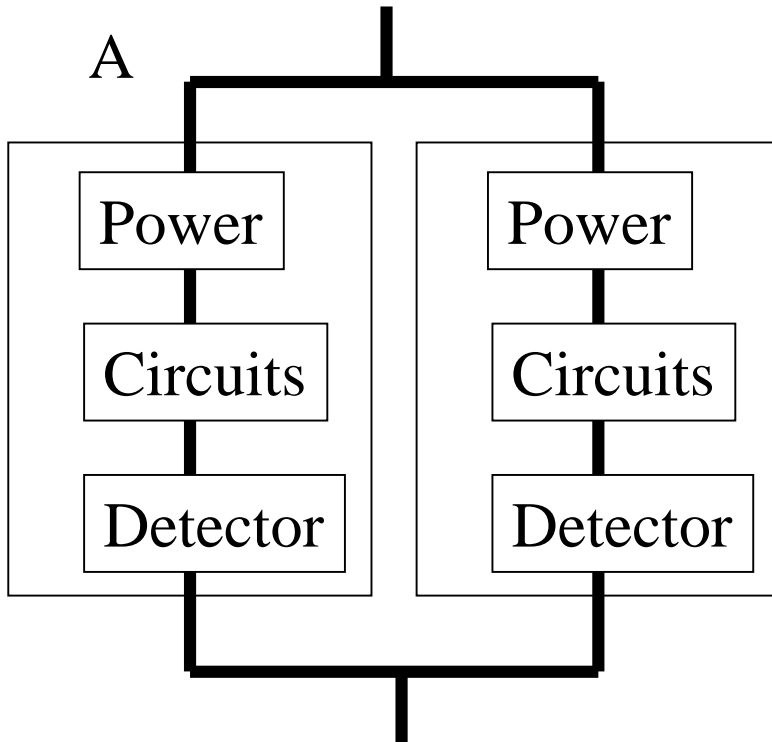
Exercise 10-1



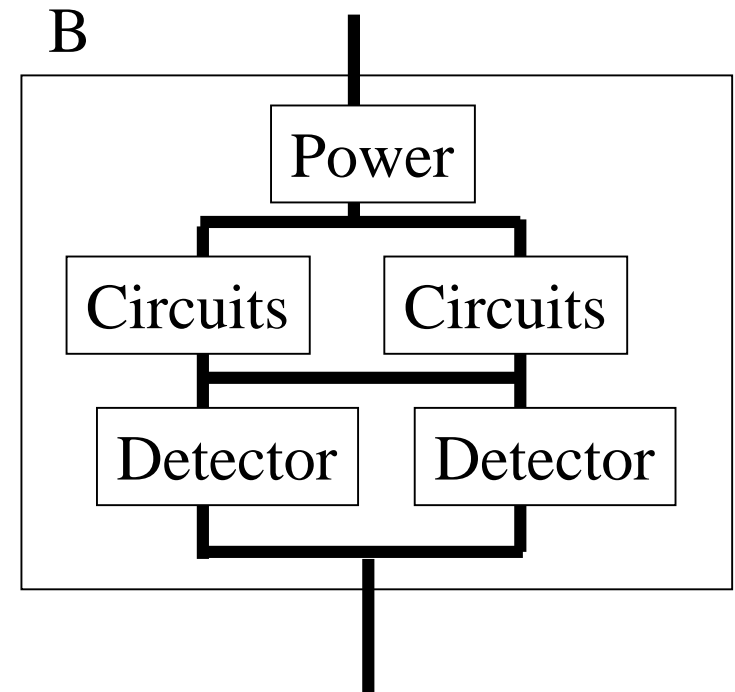
Calculate required days to complete all activities in case of the above schedule network diagram (PDM). Then, show critical path in the figure.

Exercise 10-2

Compare reliability of the system A and the system B. The system A has two sensors. Each sensor consists of a power supply (Reliability is 0.99), electrical circuits for signal processing (Reliability is 0.9), and a detector (Reliability is 0.8), respectively. The system B has one sensor which has internal redundancy except for power supply. Reliability of switching function of each unit is 1.0.



Reliability



Reliability